

# BECOME A MEMBER

Cockington is cared for by Torbay Coast & Countryside Trust (TCCT). We're Torbay's conservation charity. Become a member and support our work at Cockington and many other places, like Berry Head NNR and Ocombe Farm.

Membership starts from as little as £37.50 per person, per year (including a member's Parking and Benefits Package at £12.50).

Or simply support our work and keep in touch with news and events for just £25 per person, per year (excludes Parking and Benefits Package).

Joint packages available too!

As a TCCT member you'll be supporting our work, and you'll receive:

- A TCCT Events Guide at least twice a year.
- Invites to exclusive members-only events.
- Updates on our projects, work and campaigns.

With a Parking & Benefits Package you'll receive:

- A Free parking pass for all Trust 'pay to park' car parks.
- And a Benefit Card for Discounts at Ocombe Farm Café, the Guardhouse Café at Berry Head, Kents Cavern and Cockington Carriages.



**JOIN TODAY!**  
**T: 01803 520 022**  
**E: [info@countryside-trust.org.uk](mailto:info@countryside-trust.org.uk)**  
**[www.countryside-trust.org.uk/members](http://www.countryside-trust.org.uk/members)**



Torbay Coast & Countryside Trust is a proud partner of the English Riviera UNESCO Global Geopark, caring for important geological sites like Cockington Country Park; extraordinary places, globally recognised for their dramatic landscapes, stunning coastline and amazing historical stories.

## COCKINGTON COUNTRY PARK

Cockington, Torquay, TQ2 6XA

### OPENING TIMES

Cockington Country Park is open to the public all year round and is free to visit.

#### COCKINGTON VISITOR CENTRE OPENING TIMES:

**Summer (April – Oct):**

Tuesday – Sunday, 10am – 4pm & open Bank Holidays

**Winter (Nov – March):**

Open school holidays Monday – Sunday, 11am to 3pm, open each weekend of December 11am to 3pm

### GETTING HERE

Cockington Country Park is signposted from the A380, approaching from...

**Car:** From Torquay head along the seafront from town centre to the Livermead House Hotel. The turning is on the right hand side by the hotel sign-posted 'Cockington Country Park'. There are a number of paying car parks in the village and to the rear of Cockington Court.

**Foot:** Follow the signs from Torquay seafront, turning right just after Livermead House Hotel. It is a 20 minute walk from the seafront through the Watermeadows to the village centre. Please note that the route can become muddy in winter months and is not suitable for wheelchair users.

**Train:** From Torquay Station, Cockington is a 20-minute walk from the seafront through the Watermeadows

**Bus:** The number 62 bus serves Cockington Monday – Friday and takes you right to the village centre, behind the visitor centre.

There is no access for buses/coaches to the village centre or Cockington Court. The nearest drop off point for coaches is along Herbert Road.

### CONTACT US

**T: 01803 520 022 / 01803 605 639**  
**E: [info@countryside-trust.org.uk](mailto:info@countryside-trust.org.uk)**  
**[www.countryside-trust.org.uk/cockington](http://www.countryside-trust.org.uk/cockington)**



Design & illustration wonderassociates.com



Torbay Coast & Countryside Trust

# YOUR GUIDE TO COCKINGTON COUNTRY PARK



[www.countryside-trust.org.uk](http://www.countryside-trust.org.uk)

@cockington

/cockingtonpark #cockingtonpark

- Take part** in our practical volunteer days, or help us share this place with others by volunteering in the visitor centre.
- Join us** by becoming a Trust member; see the back of this leaflet for more details.
- Be mindful**, avoid picking any flowers or trampling areas of lawn where flowers are growing. Many of the buildings within the estate are private residences; please respect the privacy of those that live here.
- Take care**. Please take heed of warning and information signs; they are there to protect you, wildlife and livestock. All signs on gates will be current and relevant. Please use stiles and gates provided and avoid climbing over fences, hedges and walls.
- Do report any accidents**, damage or vandalism you may see across the site to one of our rangers or at the visitor centre. Camping or flying of drones is not allowed within the Country Park. Please do not light any fires, BBQs or stoves.
- Leave nothing but footprints**, take nothing but memories. Always take your litter home with you or use the bins provided. If you are visiting with your dog please be a responsible owner and clear up after it using the bins provided.
- No fishing/dogs in ponds**. We welcome respectful visitors and hope you enjoy your time here.

**of ways you can help us care for Cockington:**  
Cockington Country Park is managed by Torbay Coast & Countryside Trust. Volunteers help care for the park, assisting with a range of activities from practical management tasks, to helping us offer a memorable visitor experience by helping in the visitor centre or at some of our events. **There are a number**



Within the park you'll find Cockington Court Craft Centre, with studios and workshops hosting independent crafters and makers. The Church of St Mark and St Mary is open year round.



Cockington Country Park is a haven for wildlife. From the rare cirl buntings, that rely on arable farming practices for winter feeding, to more common but equally important willow warblers.



Cockington Country Park is part of the UNESCO English Riviera Global Geopark (designated by UNESCO for its stunning geological heritage and landforms).

With recorded settlement dating back to the time of the Saxons, Cockington is a picturesque estate with 1000 years of history waiting for you to discover. Thatched cottages nestle in the village, barely changed over the centuries, whilst the Grade II Listed Cockington Court and eleventh century church lie within the boundaries of the country park itself. Explore further and you'll find the old Gamekeeper's Cottage and the estate's two former Lodges, all sitting within the historic, landscaped parkland.



Located in the heart of Torbay, between the seaside towns of Paignton and Torquay, Cockington Country Park is a mix of stunning gardens, open parkland, woodland and countryside. Within the 420 acre park are ornamental lakes, memorial rose garden, church, arboretum - containing a collection of specimen trees - and Cockington Court, a historic manor house with working craft studios. Sitting at the entrance to the park is the beautiful thatched village of Cockington.



# WELCOME TO COCKINGTON



# CARE FOR THIS SPECIAL PLACE



# GET THE MOST OUT OF YOUR VISIT



## WALKING ROUTES

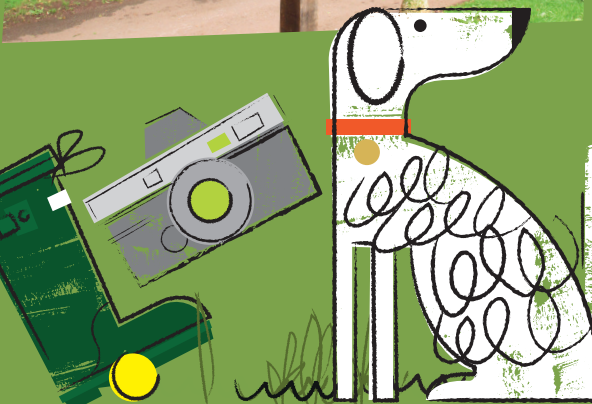
- Lakes Walk** 0.5 miles  
Relaxed Walk
- Manscombe Woods Walk** 0.9 miles  
Relaxed Walk
- Hellinghay Walk** 0.2 miles  
Short woodland Walk
- Estate Walk** 1.5 miles  
Circular Walk
- Estate Walk**  
avoiding stile & alternate bad weather route



Start your visit at Cockington Visitor Centre in the heart of the village, for information on how to get around, where to go and what to see.

## DISCOVER

- With displays and changing exhibitions, the visitor centre is a must for anyone wanting to find out more about Cockington's unique heritage.
- The country park is home to a great diversity of trees, including mature oaks, sweet chestnut, beech and the only national collection of hickory trees in the UK.



## EXPLORE

- There are four walking routes within the country park. Pick up a walk leaflet from Cockington Visitor Centre (also available to download from the Trust's website). The waymarked routes cover different distances and terrain, guiding you round the estate from the more formal, planted park to the wider countryside estate with its views across the bay to the sea.
- A mobility tramper is available to hire from the visitor centre through the Countryside Mobility Scheme. Dogs with responsible owners are welcome throughout the site, with the exception of the children's play area and some seasonal restrictions on the wider estate. Most businesses are dog-friendly.
- Follow part of the scenic 35-mile John Musgrave Heritage Trail which runs through the country park. Developed by the South-Devon Ramblers, the trail links the Torbay to Totnes Trail with the Dart Valley.

## ENJOY

- Pick up a children's trail or activity sheet from the visitor centre and explore the park with your little ones.
- Wander the walled Art Garden, with hidden artwork, open air rooms and a story telling area.
- Take a scenic ride through the park with Cockington's very own horse-drawn carriage company.
- Pop into the Visitor Welcome Point and Gallery in Cockington Court, showcasing art and handmade products by the Court's creative tenants, local artists and craft makers.



## INDULGE

- Enjoy a delicious Devon Cream Tea in one of Cockington's cafes or tearooms - just make sure you put the cream on first!
- Watch the glass blowers create amazing works of art, hear the blacksmith clinking away in his forge, smell the delightful aromas and taste the chocolate created by the chocolatier.
- Discover over 20 skilled and contemporary artists and craft makers in the Stable Yard and Sea Change Studios and buy crafts directly from the makers. Take time to browse in the village shops whilst looking for the perfect gift - for a friend, relative or yourself!

## RELAX

- A gentle stroll along the main drive through the landscaped parkland brings you to a series of three ponds, rather grandly named The Lakes by the estate's former owners! Look out for herons perching high above in the surrounding trees, or in the spring watch ducklings feeding - with ever vigilant mum paddling close by. You may even see carp leaping from the lower pond!
- Spend time in the Memorial Rose Garden. Once the probable location of a small private menagerie, which included a bear, this walled garden is now a haven of peace and tranquillity. Take time to relax and admire the beautiful planting and heady scent of the roses, all cared for by the country park's Head Gardener and team of volunteers.
- Soak up the atmosphere in the 1930s Lutyens designed Drum Inn, in the village.

